



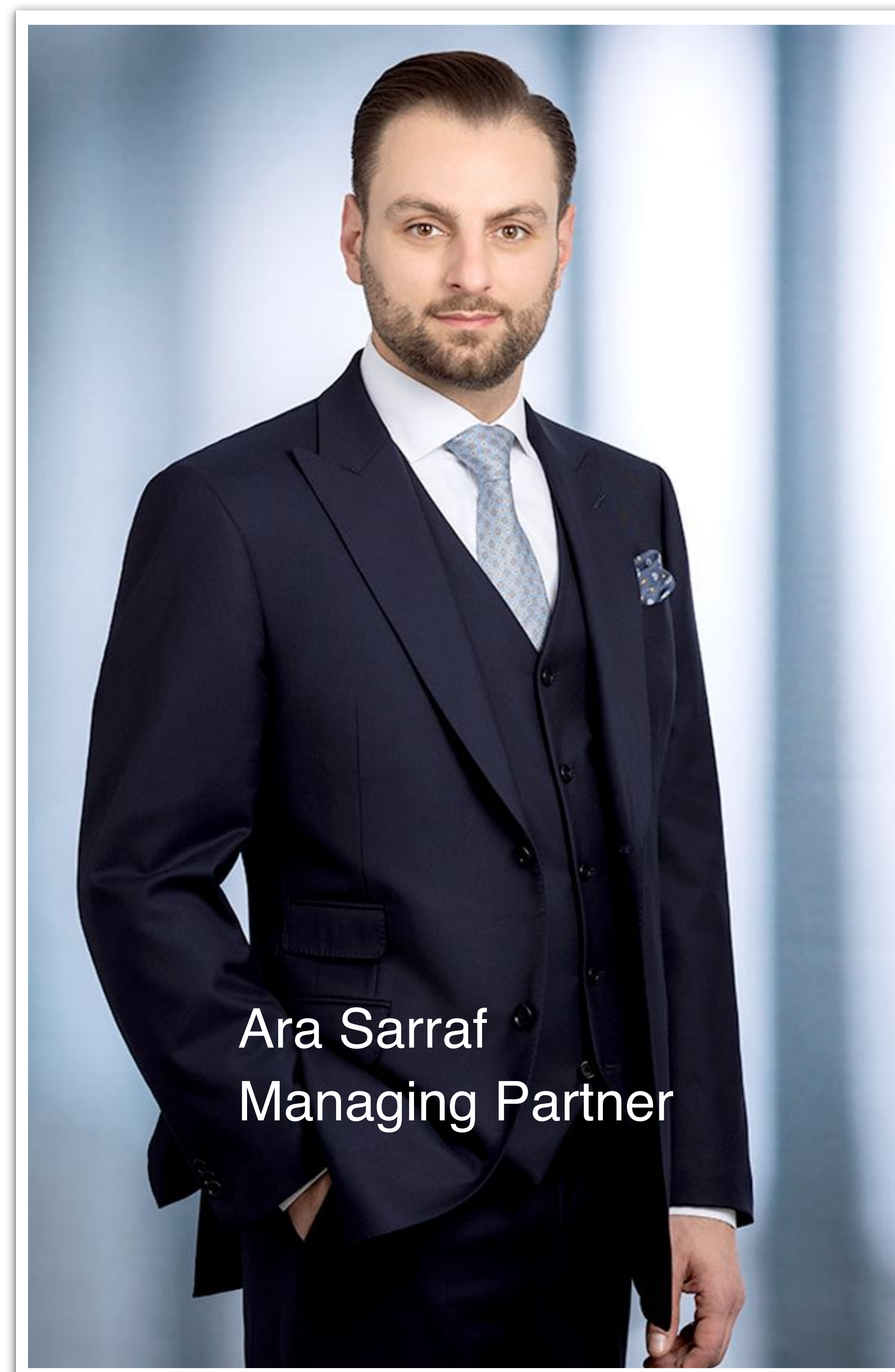
# THE LION GROUP

EMPOWERING INDUSTRIES.  
SHAPING THE FUTURE.





**The Lion Group** unites three specialized business units – personnel, electronics procurement, and industrial automation – under one forward-looking structure. Our strength lies in our ability to turn complex challenges into concrete solutions – pragmatic, precise, and partnership-driven.



Ara Sarraf  
Managing Partner



# THE LiON GROUP



**LiON WORK SOLUTION**  
PERSONALDIENSTLEISTUNGEN

is a specialist in employee leasing, personnel placement, and HR services, providing companies with qualified professionals and offering flexible, tailored solutions to meet individual staffing needs.



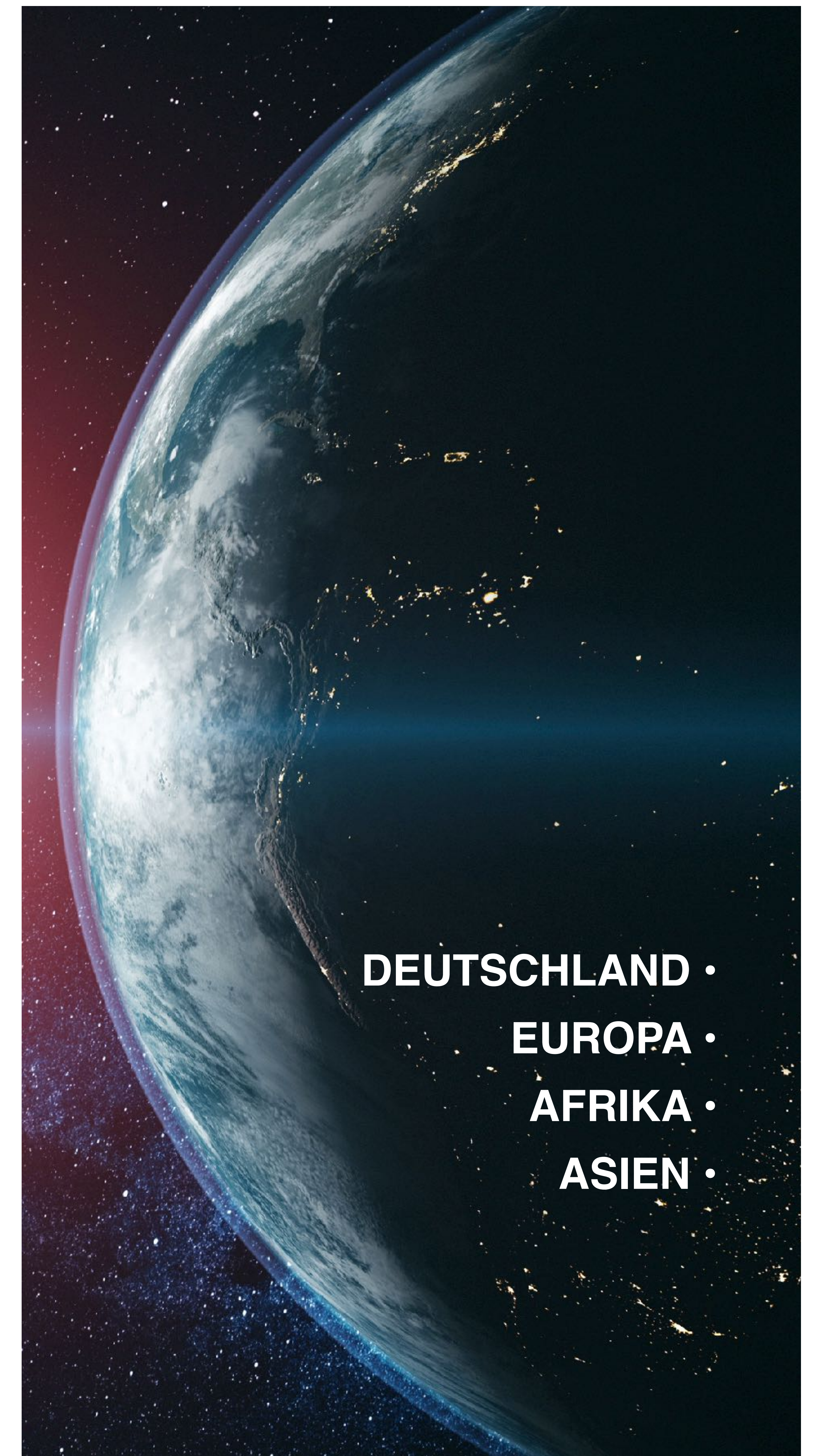
**LiON ELECTRONIC SOLUTION**  
SUPPLY CHAIN PARTNER

is a specialist in the global sourcing of electronic and industrial components, providing active, passive, and electromechanical parts as well as automation components such as cameras, controllers and spare parts for advanced industrial applications.



**LiON SMART EQUIPMENT SOLUTION**  
ENGINEERING THE HUMAN FUTURE

develops and integrates state-of-the-art automated production systems with intelligent Industry 5.0 solutions to optimize manufacturing processes, increase efficiency, and lead companies into the digital era of industry.



DEUTSCHLAND •  
EUROPA •  
AFRIKA •  
ASIEN •







**LION WORK SOLUTION**  
PERSONALDIENSTLEISTUNGEN

LION WORK SOLUTION GMBH

<https://lion-work-solution.de>



*"We don't just deliver personnel – we deliver stability, efficiency, and planning reliability for your day-to-day operations."*

## WHY LION WORK SOLUTION?

- ✓ **Comprehensive Service Portfolio –**  
Employee leasing, personnel placement, and customized HR services to reduce turnover and support long-term workforce planning
- ✓ **Cost Efficiency Through Flexibility –**  
Avoid fixed personnel costs through demand-oriented workforce deployment and rapid response to market dynamics
- ✓ **Immediate Availability –**  
Broad network of experienced professionals from industry, logistics, and services ready for immediate deployment





# WHY OUR EMPLOYEE NETWORK MAKES THE DIFFERENCE



## ✓ Extensive Talent Network –

We have a broad and diverse network of experienced and qualified professionals from various industries.



## ✓ Comprehensive Preselection –

Through our thorough selection process, we ensure that we identify the most suitable candidates for the specific requirements of our clients.



## ✓ Tailored Placement –

We carefully match each candidate's unique skills and qualifications to the specific requirements of our clients' job openings.



## ✓ Ongoing Support –

Our dedicated team provides continuous guidance and support to both our clients and the placed employees to ensure a successful and lasting collaboration.





# EXPERTS FOR EVERY CHALLENGE

## Production & Manufacturing

- Metal, electrical, and skilled trades
- Specialists for assembly, machine operation & industrial processes

## Engineering & Technical Development

- IT, design & engineering
- Specialists in planning, development & optimization

## Warehouse & Logistics

- Order picking, goods receipt & dispatch
- Logistics experts for efficient material flows

## Security & Quality Management

- Protection & security for industrial sites and sensitive areas
- Specialists in quality control & rework

## Administration & Commercial Services

- Accounting, finance & controlling
- Sales & customer management

## Maintenance & Facility Management

- Cleaning & technical support for operational facilities
- Maintenance & operational safety



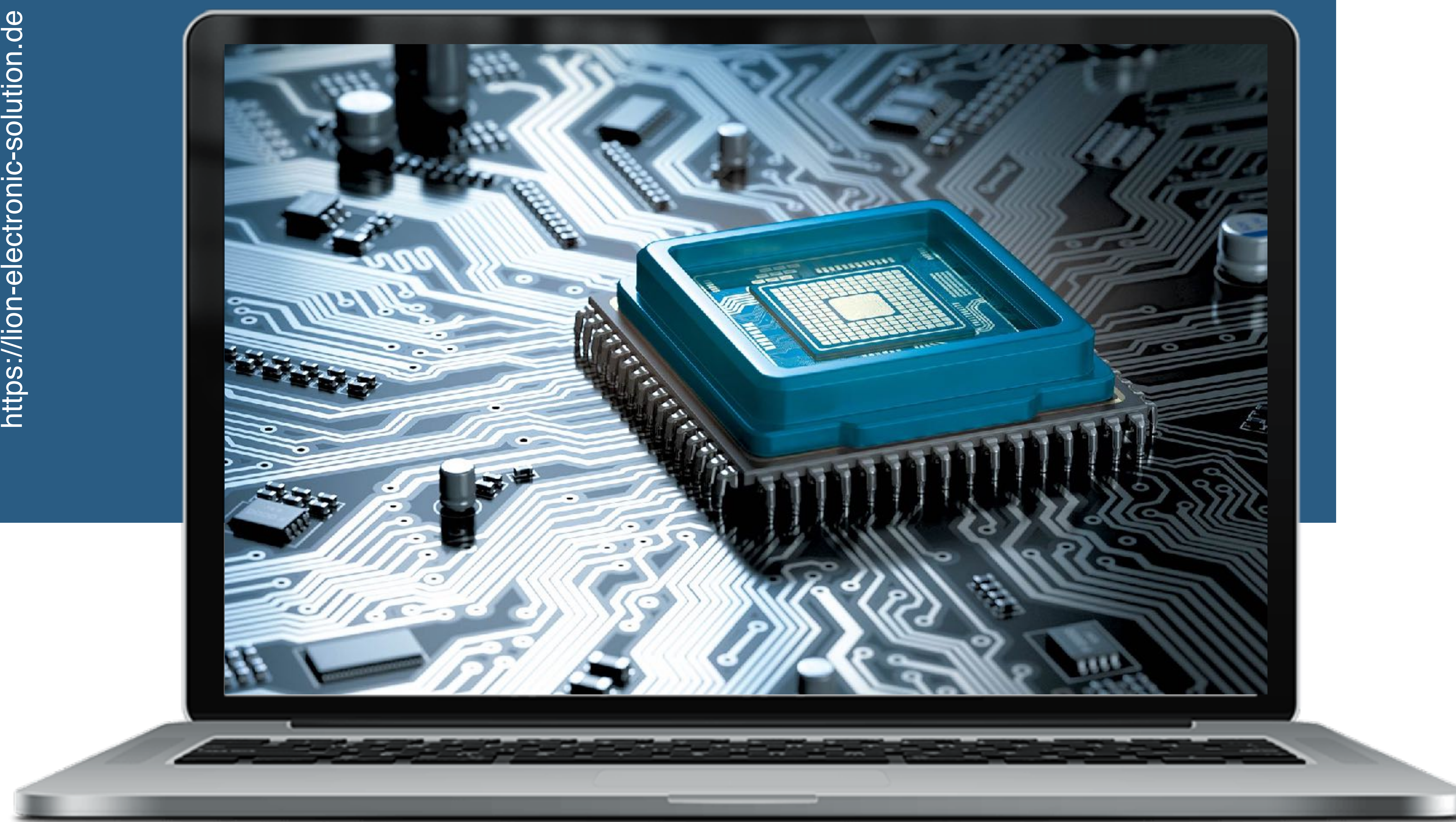




**LION ELECTRONIC SOLUTION**  
SUPPLY CHAIN PARTNER

LION ELECTRONIC SOLUTION

<https://lion-electronic-solution.de>



## WHY LION ELECTRONIC SOLUTION?

- ✓ Excellent Quality –  
Only certified and tested components from renowned manufacturers
- ✓ Optimal Pricing –  
Cost-efficient solutions through smart purchasing strategies
- ✓ Maximum Availability –  
Global sourcing and strategic partnerships for immediate delivery

*"We connect your requirements with the best components on the market – fast, reliable, and future-oriented."*



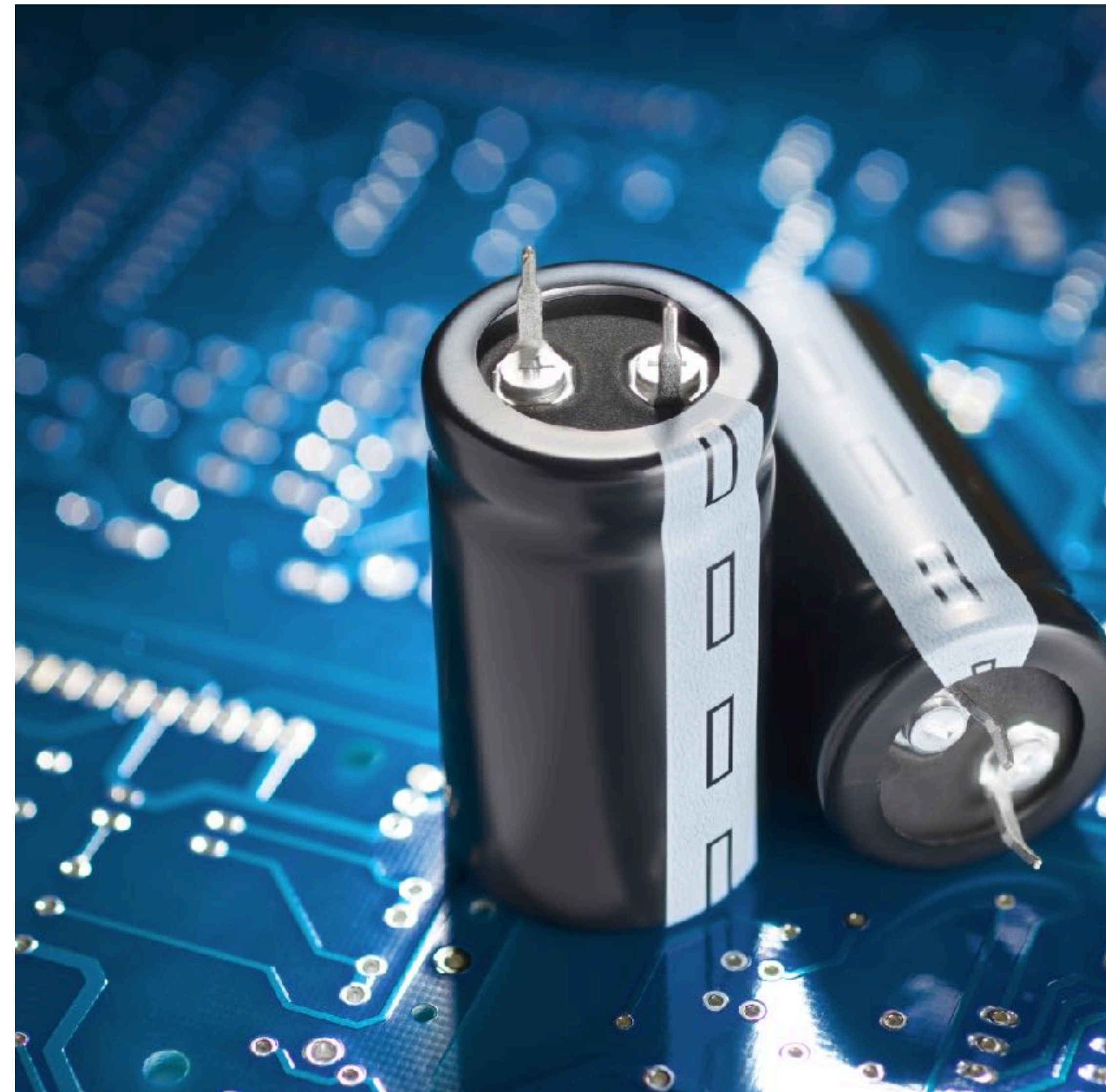
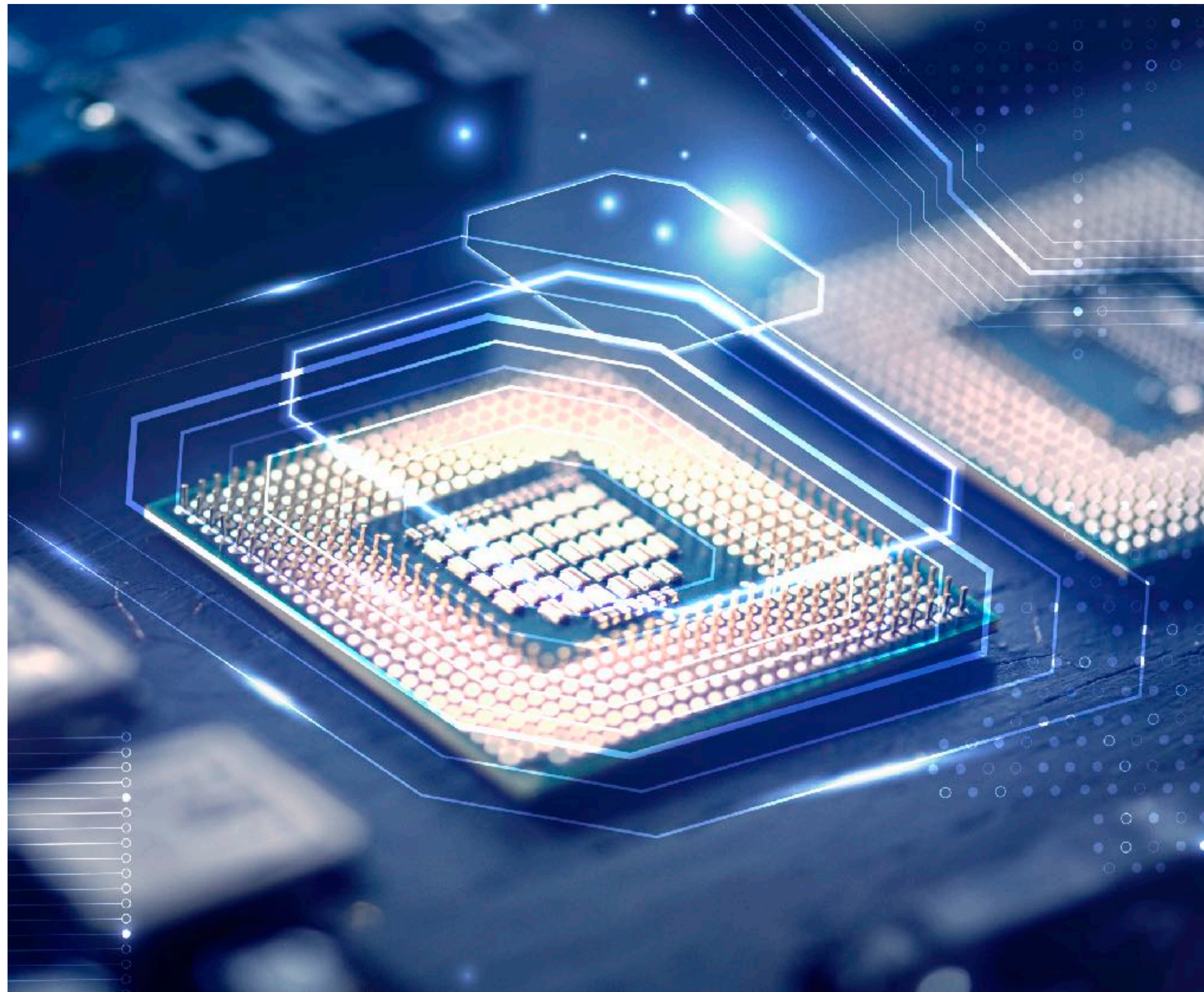




**LION ELECTRONIC SOLUTION**  
SUPPLY CHAIN PARTNER

LION ELECTRONIC SOLUTION

<https://lion-electronic-solution.de>



✓ Active Components –

Microcontrollers, transistors, operational amplifiers, diodes, voltage regulators

✓ Passive Components –

Capacitors, resistors, inductors, thermistors, varistors

✓ Electromechanical Components –

Push buttons & switches, relays, connectors, pin headers, fuses



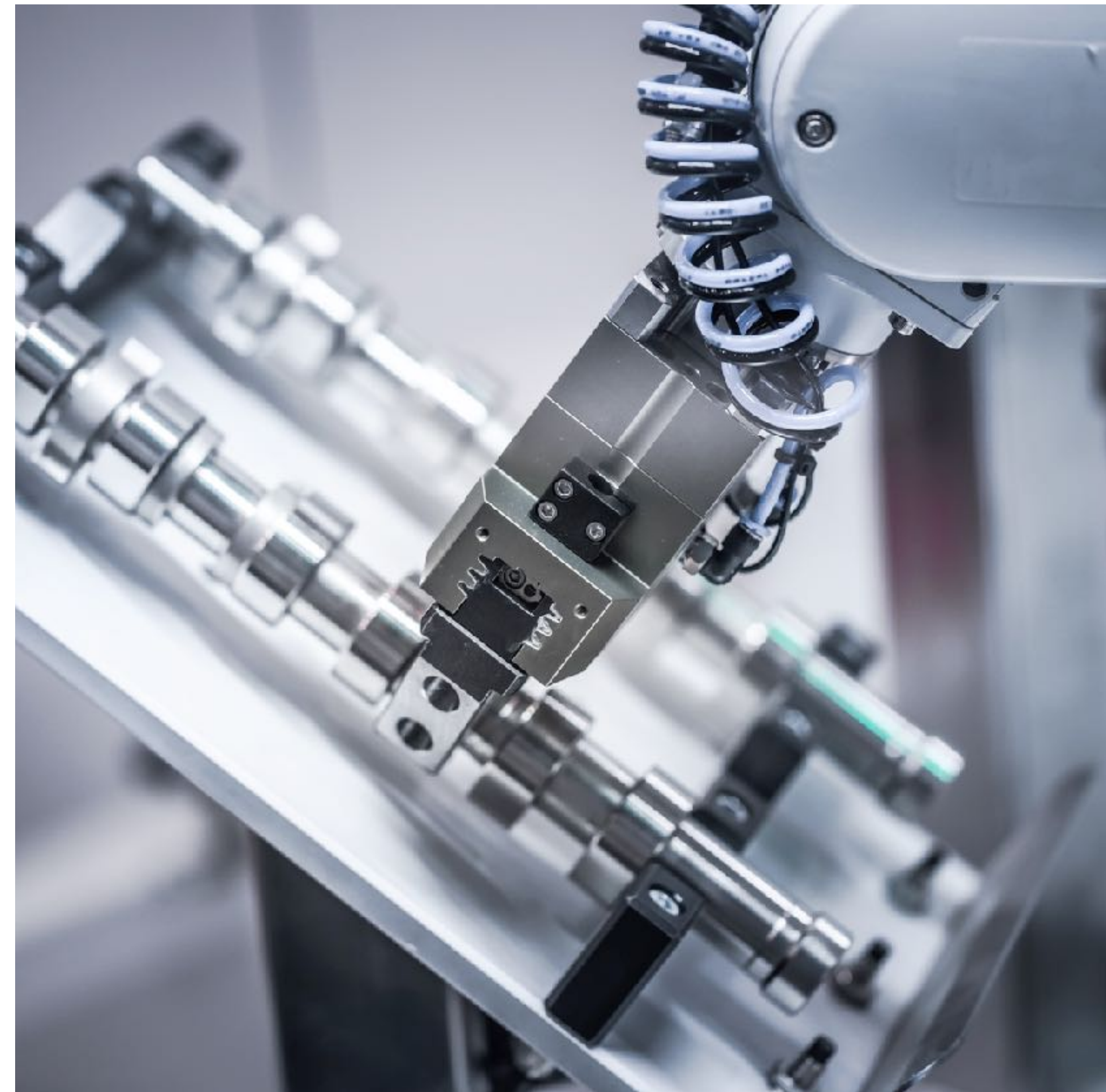
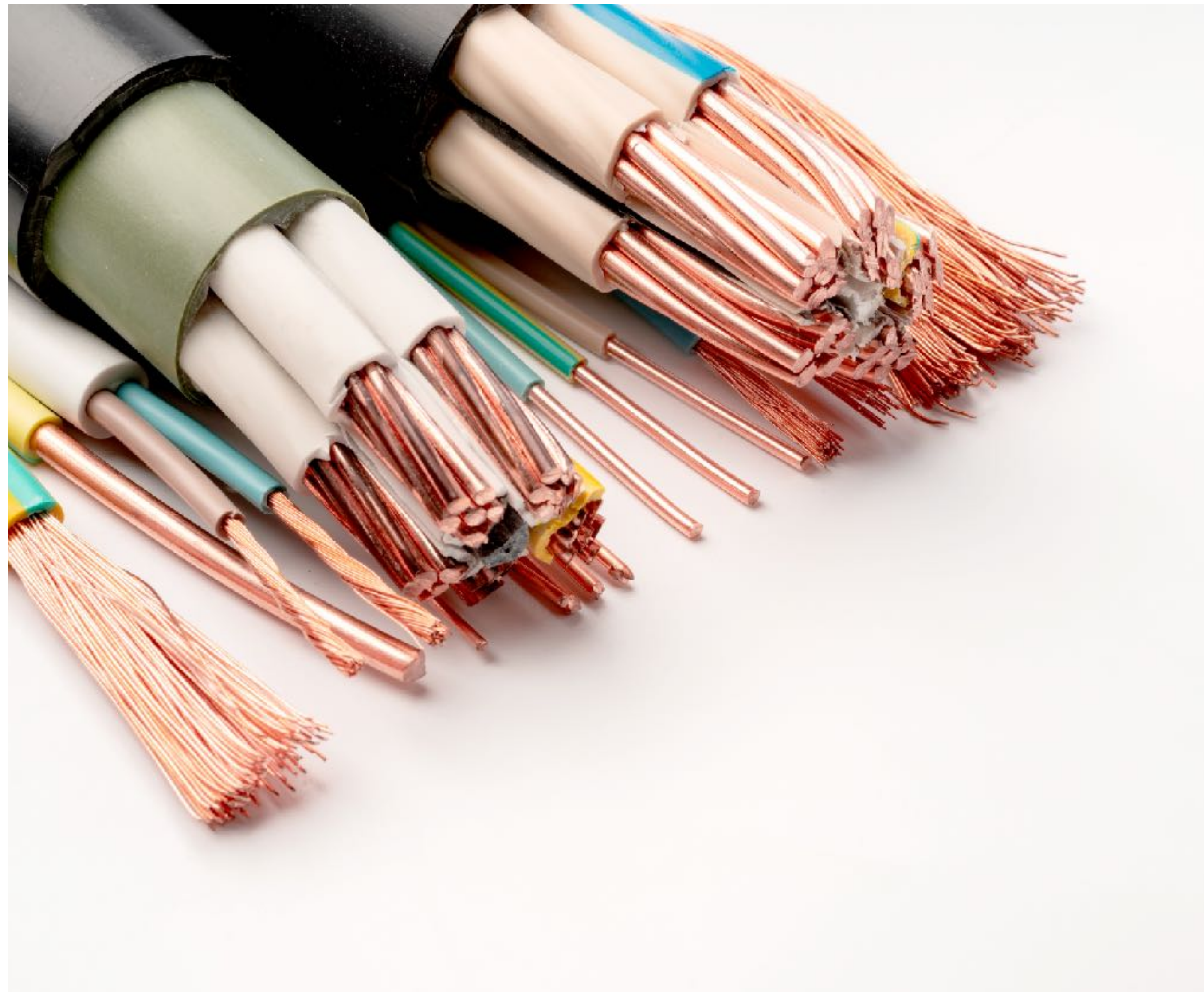




**LION ELECTRONIC SOLUTION**  
SUPPLY CHAIN PARTNER

LION ELECTRONIC SOLUTION

<https://lion-electronic-solution.de>



✓ Connectors & Interconnection Component –

Terminal blocks, connectors, crimp contacts, housings & couplings, adapters & transitions

✓ Cable & Wiring Systems –

Coaxial cables, cable assemblies, control cables, data cables, stranded & single-core wires

✓ Industrial & Automation Components –

Cameras, controllers, displays, sensors, HMI modules, PLC systems, industrial control units







**LION SMART EQUIPMENT SOLUTION**  
ENGINEERING THE HUMAN FUTURE

LION SMART EQUIPMENT SOLUTION

<https://lion-se-solution.de>



## WHY LION SMART EQUIPMENT SOLUTION?

- ✓ **Intelligent Automation –**  
Customized engineering solutions with cutting-edge robotics for maximum productivity
- ✓ **High-Precision Performance Machines –**  
Technology that delivers reliability, efficiency, and flexibility
- ✓ **Long-Term Support & Quality –**  
Comprehensive support throughout all project phases – solution-focused, fast, and partnership-based

*"We deliver smart machine solutions that think ahead – for sustainable growth and true industrial performance."*





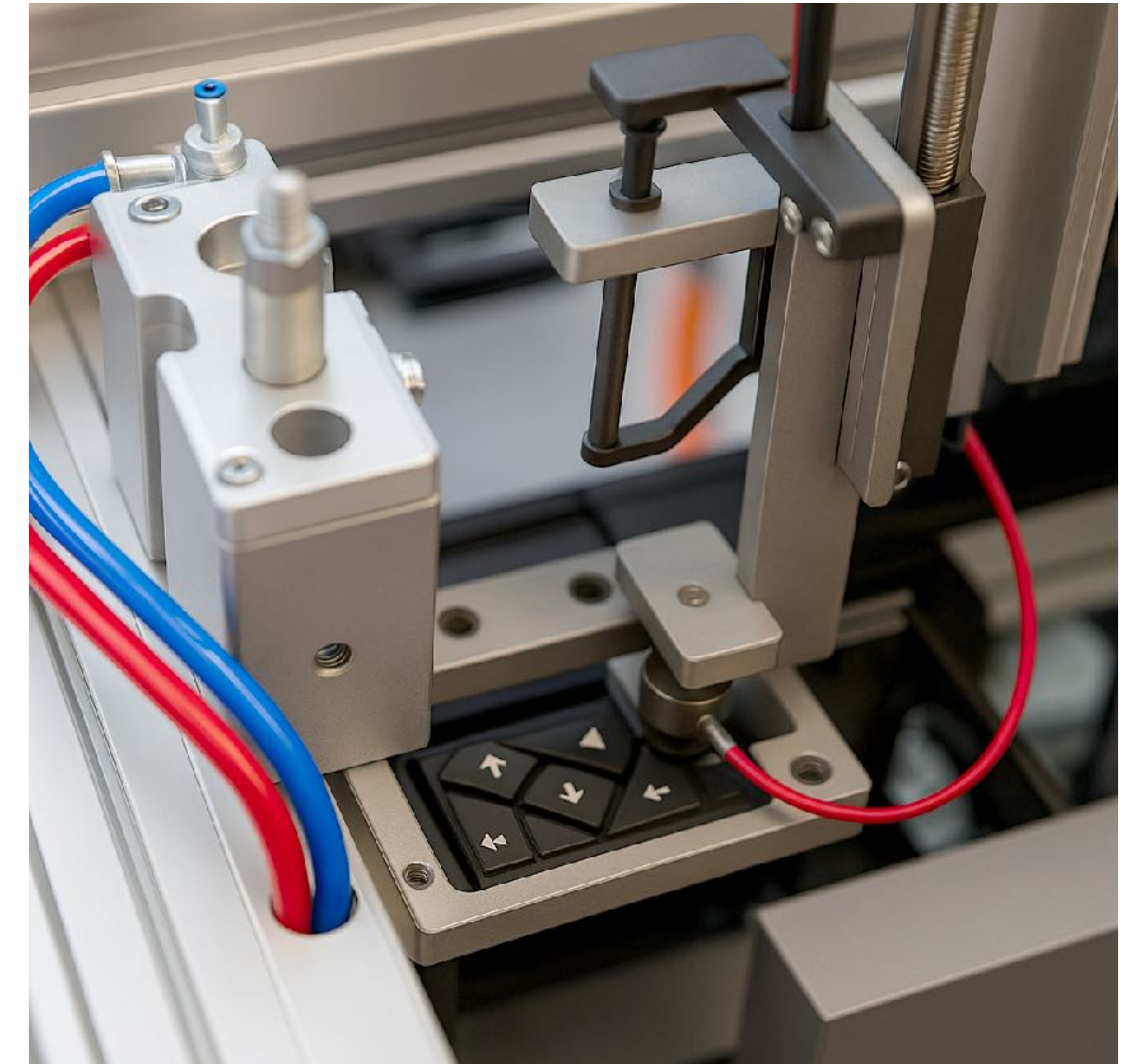


# LION SMART EQUIPMENT SOLUTION

ENGINEERING THE HUMAN FUTURE

LION SMART EQUIPMENT SOLUTION

<https://lion-se-solution.de>



## SMART MACHINE SOLUTIONS • FOR COMPLEX PRODUCTION REQUIREMENTS

### ✓ Intelligent Testing Systems and Inspection Equipment –

We develop customized testing systems and inspection equipment that ensure the quality, functionality, and reliability of your products throughout the entire manufacturing process...

### ✓ Individually Configured Assembly Lines –

Whether you're launching a new product line or optimizing an existing production process – we deliver tailored assembly systems precisely matched to your requirements...

### ✓ Vision Inspection Systems –

We design and integrate advanced vision systems to ensure product quality and compliance through automated and reliable image processing...

### ✓ Special Machines for Demanding Cable Applications –

We develop highly automated testing and assembly stations for the precise and efficient processing of automotive wiring. Our solutions cover all process steps.





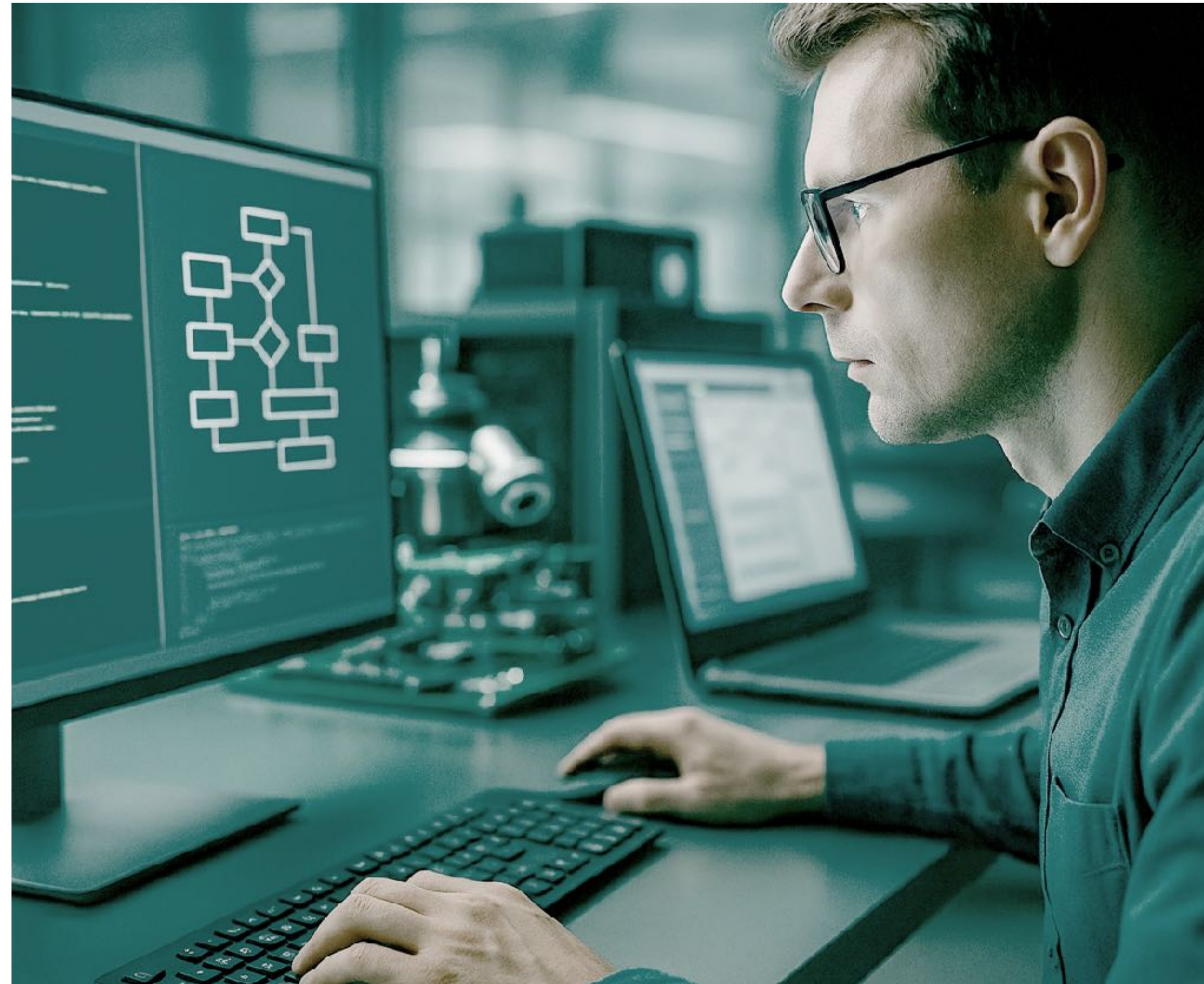


# LION SMART EQUIPMENT SOLUTION

ENGINEERING THE HUMAN FUTURE

LION SMART EQUIPMENT SOLUTION

<https://lion-se-solution.de>



## DIGITAL INTELLIGENCE • FOR INDUSTRIAL APPLICATIONS

### ✓ Engineering & Industrial Services –

We support your industrial projects with advanced technical services focused on performance, quality, and manufacturability...

### ✓ Industrial Software Development –

We develop customized software solutions to support your industrial workflows, testing processes, and traceability – enabling seamless integration and maximum efficiency...

### ✓ Artificial Intelligence & Big Data –

We integrate artificial intelligence (AI) and big data analytics directly into your machines to unlock new levels of performance, reliability, and responsiveness. Our systems don't just analyze data – they learn, decide, and optimize.







# THE LION GROUP

## KEY DRIVERS OF SUCCESS

### ✓ Holistic Approach –

From staffing to electronics and automation: integrated solutions from a single source

### ✓ Value-Driven Networking –

Sustainable win-win partnerships through a strong B2B network with measurable benefits for all parties

### ✓ High Reliability & Responsiveness –

Strong focus on speed of execution, delivery reliability, and commitment

### ✓ Customer-Centered Thinking –

Fast solutions, open communication, and pragmatic collaboration

*"We move fast, think in solutions, and deliver with reliability – across all our business areas."*





# Organizational Chart







# THE LION GROUP

EMPOWERING INDUSTRIES.  
SHAPING THE FUTURE.

GERMANY • EUROPE • AFRICA • ASIA

## CONTACT DETAILS:

Hanauer Landstraße 328-330  
D – 60314 Frankfurt am Main  
GERMANY

[info@the-lion-group.de](mailto:info@the-lion-group.de)  
<https://the-lion-group.de>

+49 69 710 477 000



**LiON WORK SOLUTION**  
PERSONALDIENSTLEISTUNGEN



**LiON ELECTRONIC SOLUTION**  
SUPPLY CHAIN PARTNER



**LiON SMART EQUIPMENT SOLUTION**  
ENGINEERING THE HUMAN FUTURE







# THE LION GROUP

EMPOWERING INDUSTRIES. SHAPING THE FUTURE.

<https://the-lion-group.com>